

The Keadby 3 Low Carbon Gas Power Station Project

Document Ref: 4.15

Planning Inspectorate Ref: EN010114

The Keadby 3 (Carbon Capture Equipped Gas Fired Generating Station) Order

Land at and in the vicinity of the Keadby Power Station site, Trentside, Keadby, North Lincolnshire

Indicative Landscape and Biodiversity Plan

The Planning Act 2008

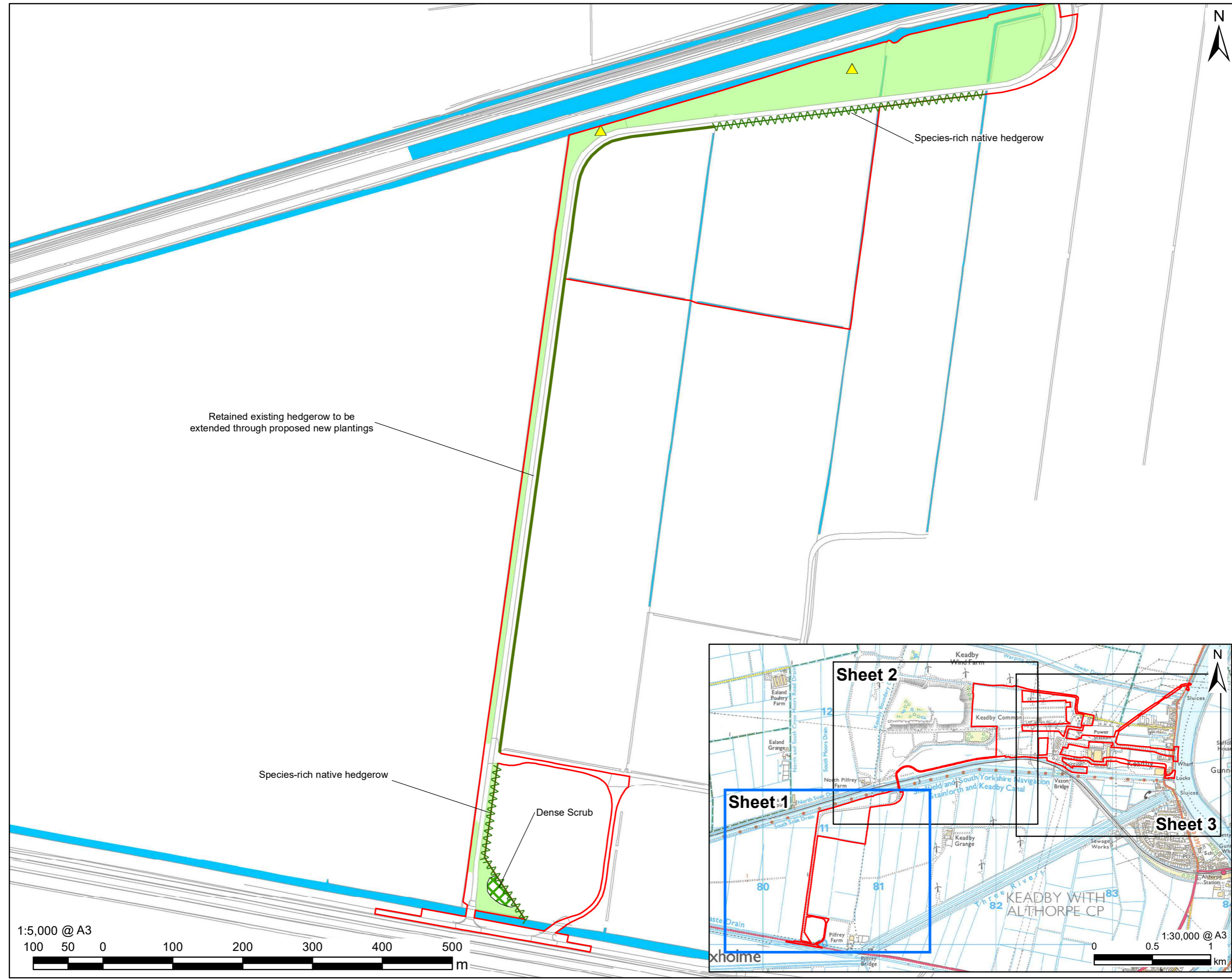
The Infrastructure Planning (Applications: Prescribed Forms and Procedure) Regulations 2009 - Regulation 5(2)(o)

Applicant: Keadby Generation Limited

Date: May 2021

DOCUMENT HISTORY

Document Ref	4.15/Indicative Landscape and Biodiversity Plan
Revision	VP1.0
Document Owner	AECOM



AECOM

PROJECT
The Keadby 3 (Carbon Capture Equipped Gas Fired Generating Station) Order

APPLICANT
Keadby Generation Limited

CONSULTANT
AECOM Limited
2 City Walk
Leeds
LS11 9AR
T: 0113 391 6800
www.aecom.com

LEGEND

- The Order Limits
- Running Water
- Proposed Dense Scrub
- Grassland Creation
- Proposed Species-Rich Native Hedgerow
- Retained existing hedgerow
- Indicative Locations for Barn Owl Towers

NOTES
Reproduced from Ordnance Survey digital map data © Crown copyright 2021. All rights reserved. Licence number 0100031673.

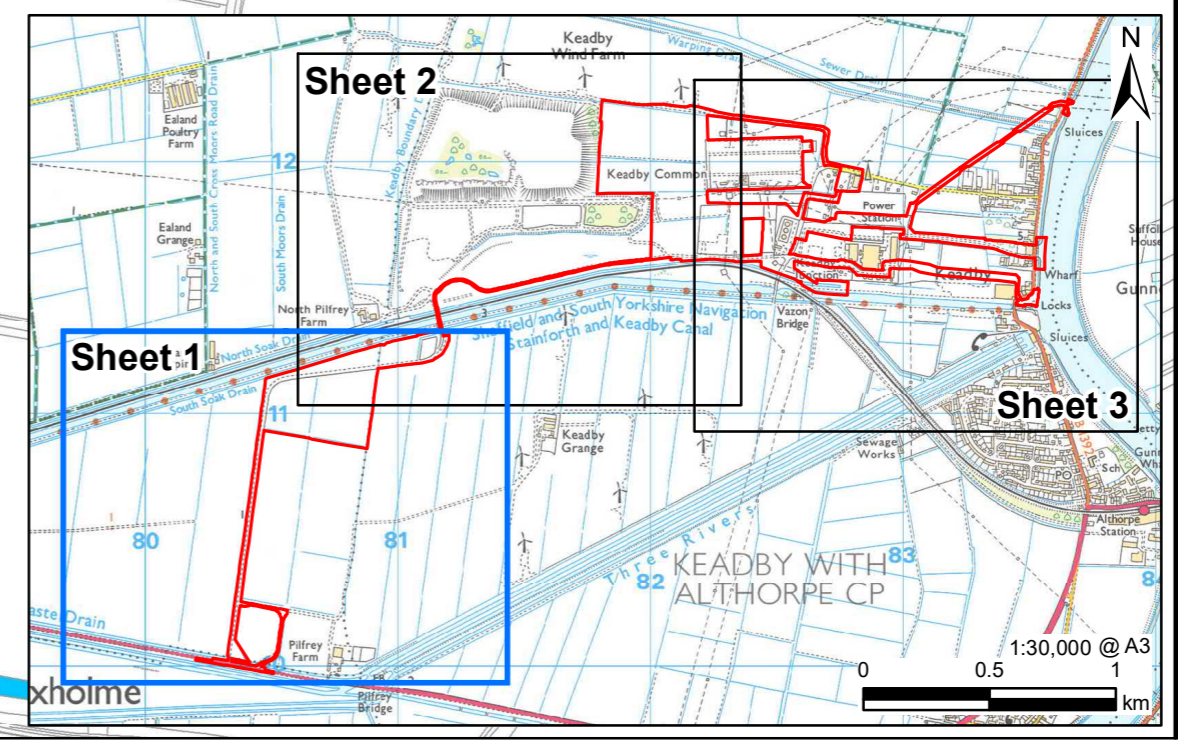
The Keadby 3 (Carbon Capture Equipped Gas Fired Generating Station) Order Regulation 5(2)(o) - Infrastructure Planning (Applications: Prescribed Forms and Procedures) Regulations 2009

ISSUE PURPOSE
DCO APPLICATION

PROJECT NUMBER
60625943

SHEET TITLE
Indicative Landscape and Biodiversity Plan
Sheet 1 of 3

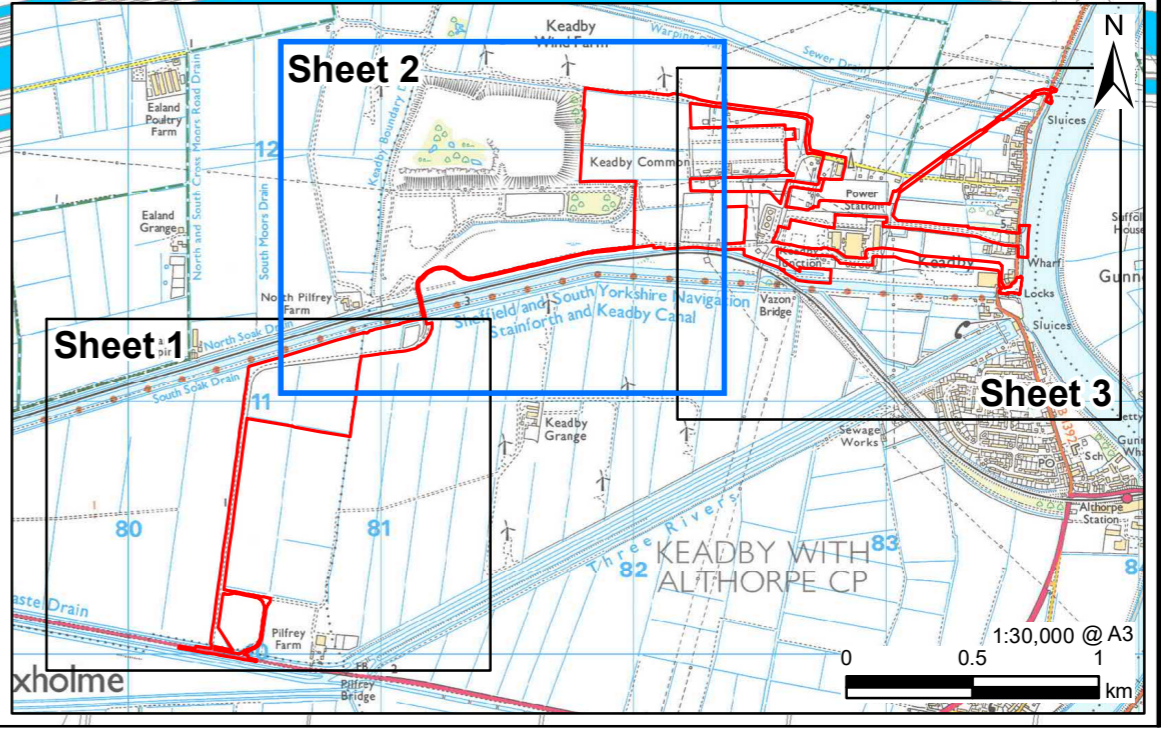
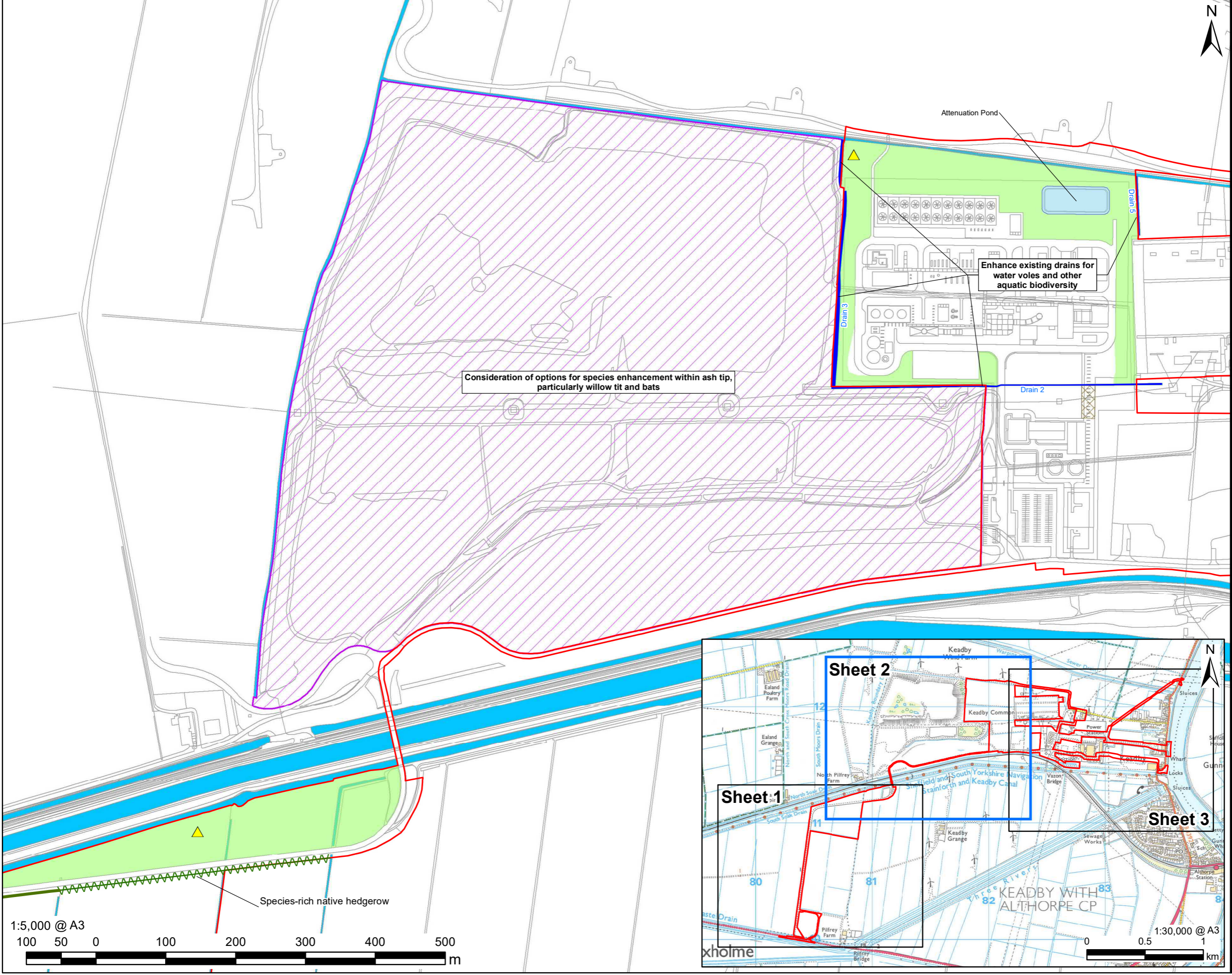
SHEET NUMBER
Application Document Ref. 4.15



This drawing has been prepared for the use of AECOM's client. It may not be used, modified, reproduced or relied upon by third parties, except as signed by AECOM or as required by law. AECOM accepts no responsibility and disclaims any liability whatsoever, to any party that uses or relies on this drawing without AECOM's express written consent. Do not scale this document. All measurements must be obtained from the stated dimensions.

LEGEND

- The Order Limits
- Keadby Ash Tip
- Running Water
- Enhancement of Drains
- Attenuation Pond
- Grassland enhancement over electric cable
- Grassland Creation
- Proposed Species-Rich Native Hedgerow
- Retained existing hedgerow
- ▲ Indicative Locations for Barn Owl Towers



NOTES
Reproduced from Ordnance Survey digital map data © Crown copyright 2021. All rights reserved. Licence number 0100031673.

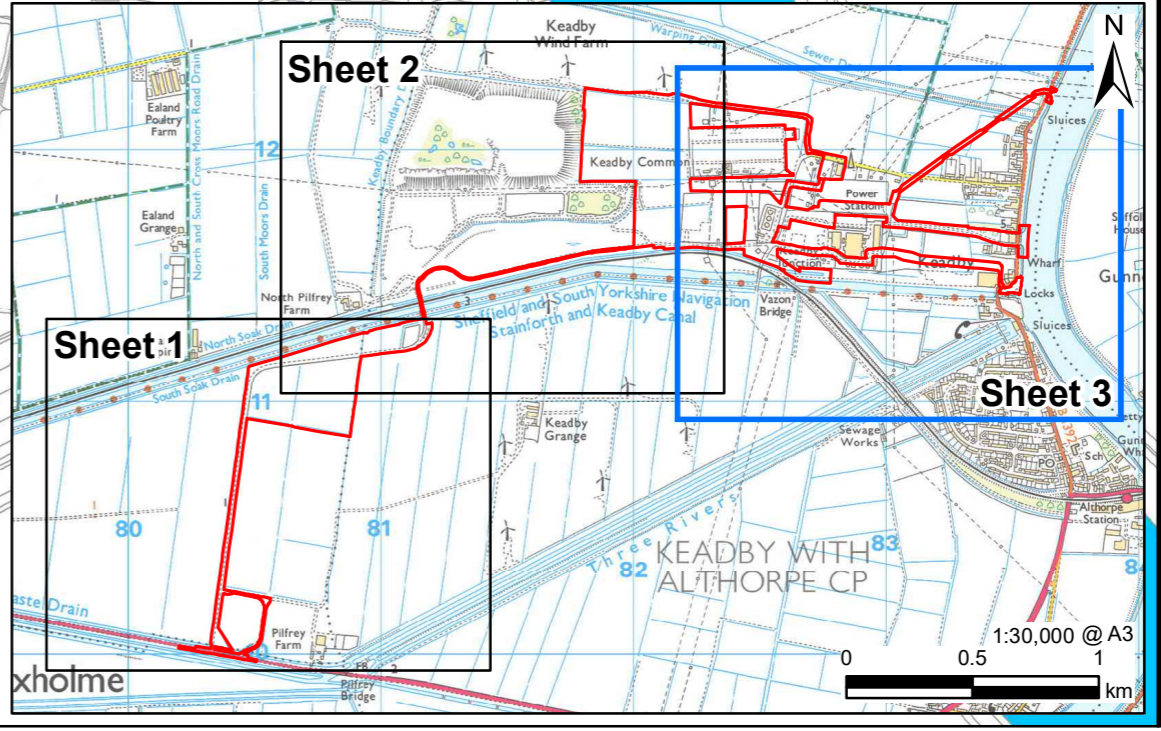
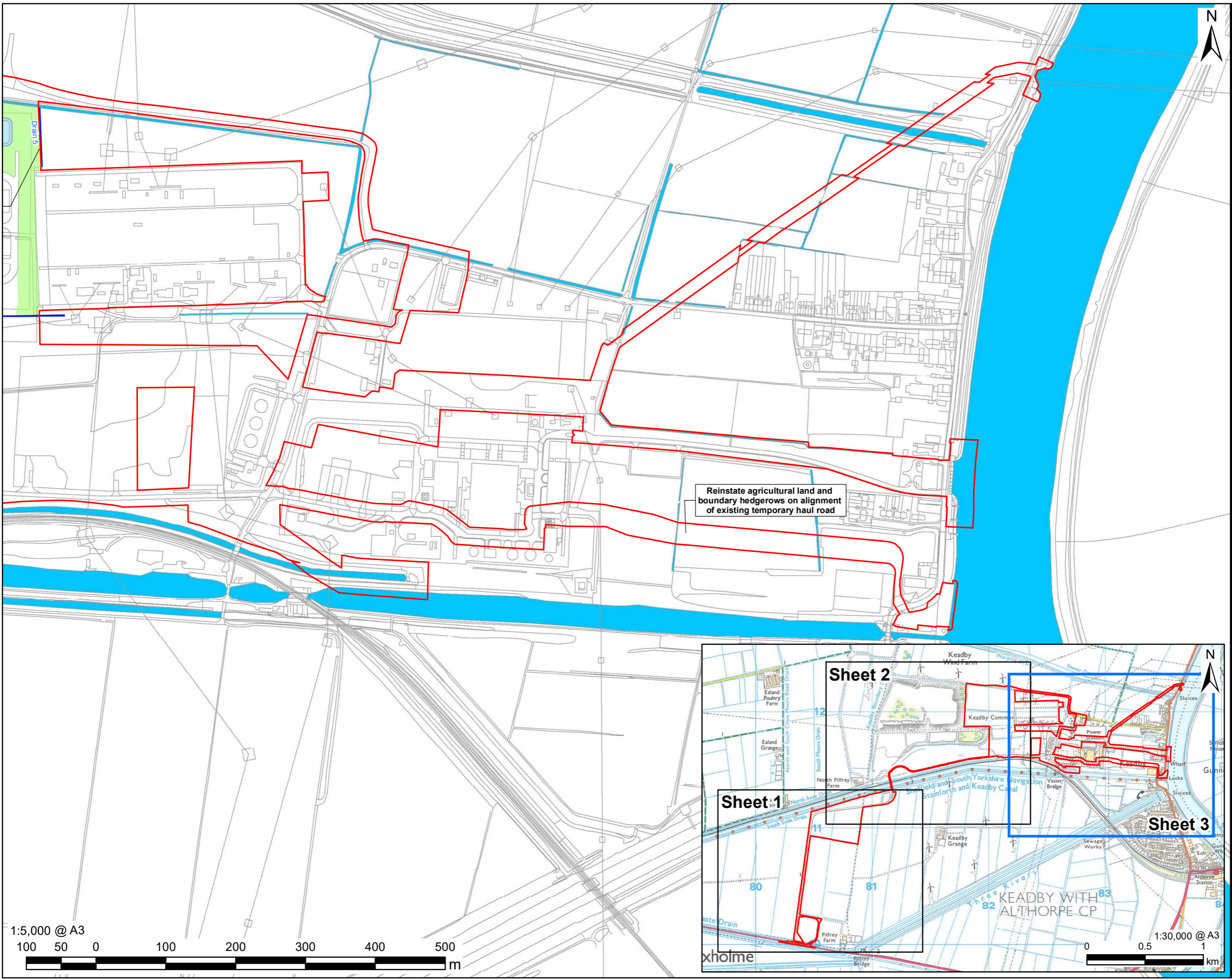
The Keadby 3 (Carbon Capture Equipped Gas Fired Generating Station) Order Regulation 5(2)(o) - Infrastructure Planning (Applications: Prescribed Forms and Procedures) Regulations 2009

ISSUE PURPOSE
DCO APPLICATION

PROJECT NUMBER
60625943

SHEET TITLE
Indicative Landscape and Biodiversity Plan
Sheet 2 of 3

SHEET NUMBER
Application Document Ref. 4.15



PROJECT
 The Keadby 3 (Carbon Capture Equipped Gas Fired Generating Station) Order

APPLICANT
 Keadby Generation Limited

CONSULTANT
 AECOM Limited
 2 City Walk
 Leeds
 LS11 9AR
 T: 0113 391 6800
 www.aecom.com

LEGEND

	The Order Limits
	Running Water
	Enhancement of Drains
	Attenuation Pond
	Grassland Creation

NOTES
 Reproduced from Ordnance Survey digital map data © Crown copyright 2021. All rights reserved. Licence number 0100031673.

The Keadby 3 (Carbon Capture Equipped Gas Fired Generating Station) Order Regulation 5(2)(o) - Infrastructure Planning (Applications: Prescribed Forms and Procedures) Regulations 2009

ISSUE PURPOSE
 DCO APPLICATION

PROJECT NUMBER

60625943

SHEET TITLE

Indicative Landscape and Biodiversity Plan
 Sheet 3 of 3

SHEET NUMBER

Application Document Ref. 4.15

This drawing has been prepared for the use of AECOM's client. It may not be used, modified, reproduced or relied upon by third parties, except as agreed by AECOM or as required by law. AECOM accepts no responsibility, and disclaims any liability whatsoever, to any party that uses or relies on this drawing without AECOM's express written consent. Do not scale this document. All measurements must be obtained from the stated dimensions.